



**Low Level Order  
Picker**  
1.0 tonnes



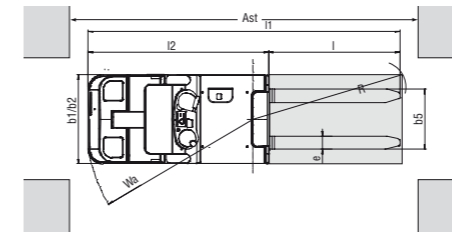
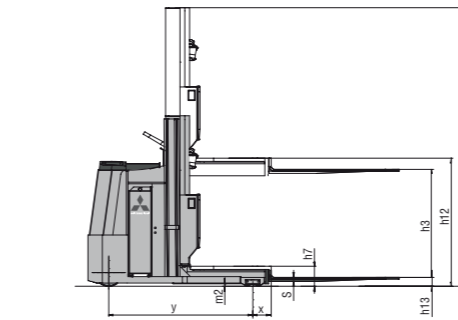
**OPBL10N  
OPBL10NF  
OPBL10NV**

Characteristics					
1.01	Manufacturer (abbreviation)		Mitsubishi	Mitsubishi	Mitsubishi
1.02	Manufacturer's model designation		OPBL10N	OPBL10NF	OPBL10NV
1.03	Power source: (battery, diesel, LP gas, petrol)		Battery	Battery	Battery
1.04	Operator type: pedestrian, (operator)-standing, -seated		Stand-on	Stand-on	Stand-on
1.05	Load capacity	Q (kg)	1000	1000	1000
1.06	At load centre	c (mm)	600	600	600
1.08	Load wheel axle to fork face (forks lowered)	x (mm)	165	165	140
1.09	Wheelbase	y (mm)	1290	1290	1270
Weight					
2.01	Truck weight with nominal load & battery	kg	2530	2570	2570
2.03	Axle loadings without load & with battery, drive/load side	kg	630/900	675/895	675/895
Wheels, Drive Train					
3.01	Tyres: P=Polyurethan, PT=Power Thane, Vul=Vulkollan, drive/load side		Vul/Vul	Vul/Vul	Vul/Vul
3.02	Tyre dimensions, front		250x100	250x100	250x100
3.03	Tyre dimensions, rear		85x90	85x90	85x90
3.05	Number of wheels, front/rear (x=driven)		1x/4	1x/4	1x/4
3.06	Track width (centre of tyres), load side	b10 (mm)	672	672	672
3.07	Track width (centre of tyres), drive side	b11 (mm)	-	-	-
Dimensions					
4.02	Height with mast lowered (see tables)	h1 (mm)	1550	1550	1550
4.03	Free lift (see tables)	h2 (mm)	-	-	-
4.05	Overall height with mast raised	h4 (mm)	2460	2460	2460
4.08	Seat height or platform height	h7 (mm)	180	180	180
4.11	Supplementary lift	h9 (mm)	-	790	-
4.14	Height of the driver's platform	h12 (mm)	1150	1150	1150
4.15	Fork height, fully lowered	h13 (mm)	80	80	80
4.19	Overall length	l1 (mm)	2795	2795	2795
4.20	Length to fork face (includes fork thickness)	l2 (mm)	1645	1645	1615
4.21	Overall width	b1/b2 (mm)	800	800	1200
4.22	Fork dimensions (thickness, width, length)	s / e / l (mm)	40/120/1150	40/120/1150	60/165/1150
4.25	Outside width over forks (minimum/maximum)	b5 (mm)	540	540	490-850
4.32	Ground clearance at centre of wheelbase, with load (forks lowered)	m2 (mm)	30	30	30
4.33a	Working aisle width (Ast) with 1000 x 1200 mm pallets, load crosswise	Ast (mm)	3040	3040	3018
4.33b	Working aisle width (Ast3) with 1000 x 1200 mm pallets, load crosswise	Ast3 (mm)	2895	2895	2870
4.34a	Working aisle width (Ast) with 800 x 1200 mm pallets, load lengthwise	Ast (mm)	3152	3152	3133
4.34b	Working aisle width (Ast3) with 800 x 1200 mm pallets, load lengthwise	Ast3 (mm)	3095	3095	3075
4.35	Turning circle radius	Wa (mm)	1530	1530	1530
Performance					
5.01	Travel speed, with/without load	km/h	9/9	9/9	9/9
5.02	Lifting speed, with/without load	m/s	0.14/ 0.19	0.14/ 0.19	0.14/ 0.19
5.03	Lowering speed, with/without load	m/s	0.15/ 0.26	0.15/ 0.26	0.15/ 0.26
5.07	Gradeability, with/without load	%	5/15	5/15	5/15
5.10	Service brakes (mechanical/hydraulic/electric/pneumatic)		Electric	Electric	Electric
Electric motors					
6.01	Drive motor capacity (60 min. short duty)	kW	2.2	2.2	2.2
6.02	Lift motor output at 15% duty factor	kW	3.0	3.0	3.0
6.04	Battery voltage/capacity at 5-hour discharge	V /Ah	24/375-465	24/ 375-465	24/375-465
6.05	Battery weight	kg	280-360	280-360	280-360
Miscellaneous					
8.01	Type of drive control		Stepless	Stepless	Stepless
8.04	Noise level, mean value at operator's ear	dB(A)	64	64	64

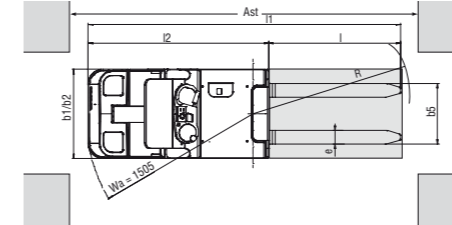
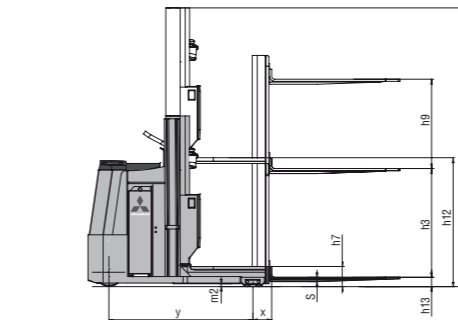


Clear display

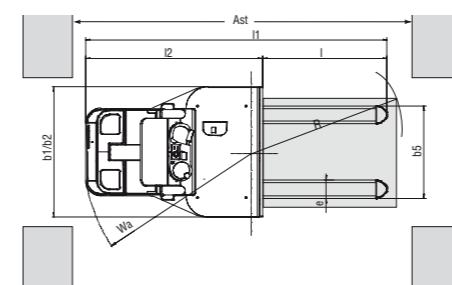
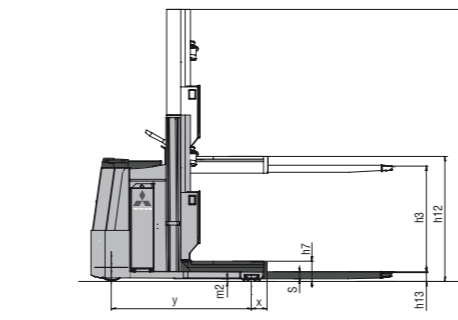
OPBL10N: basic model



OPBL10NF: with rising forks



OPBL10NV: with manual fork positioning



$$Ast = Wa + R + a$$

$$Ast = \text{Cross aisle width}$$

$$Wa = \text{Turning radius}$$

$$a = \text{Safety clearance} = 2 \times 100 \text{ mm}$$

$$R = \sqrt{(l6 + x)^2 + (b12 / 2)^2}$$

## Options

- Battery changing device.
- Safety bar at rear.
- Current output 12V/8Amp suitable for a terminal or bar code reader.
- Durable drive wheel dedicated for slippery floors.
- Rubber bumper.
- Fork length from 800 to 1600 mm.

## Comfortable

- First and second level orderpicking applications.
- Short turning radius of only 1500 mm gives exceptional manoeuvrability.
- All OPBL models are suitable for UK pallets and other bottom boarded pallets.
- The rising platform makes second level picking easy, without reaching or climbing.
- The OPBL10NF also has rising forks.
- The OPBL10NV, with manual fork positioning, enables load handling of different widths.

## Standard equipment

- Unlimited 360 degrees electrical steering.
- Powerful AC motor.
- Dual controls on both sides of the truck.
- Stepless lifting and lowering of the platform.
- Traction rollers for easy battery exchange.
- Multifunctional display with battery discharge indicator, hour metre and fault diagnostics.
- A4 Picking list holder.

## Maintenance

- Energy efficient.
- Low maintenance cost.
- Easy access to motor compartment.
- AC motor for quick acceleration and high maximum speed.

# When **reliability** is **everything**

Developed for outstanding performance and genuine value for money, the awardwinning\* range of Mitsubishi forklift trucks and warehouse equipment is built to a higher specification to maximize productivity and ensure utter reliability... whatever the application.

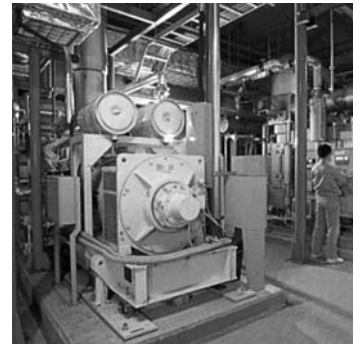
It's what you'd expect from one of the world's largest corporations whose companies are at the leading edge of technologies where performance, quality and dependability can never be compromised.

It means that, from a single safe source, we can meet 98% of all handling requirements, supplied to you via a range of competitive finance options including outright purchase, rental or leasing. So your local dealer can advise you on precisely the right product for your application... and your budget.

Moreover, because we understand how much you depend on your Mitsubishi forklift truck, we deliver the highest levels of customer support.

Through a network of carefully selected dealerships, we provide quality maintenance and customer care programmes including a choice of warranties that give complete peace of mind. Every dealership holds extensive stocks of manufacturer-approved parts, backed by a central store that holds literally millions of items constantly in stock and achieves a first-pick fulfilled rate of 97%. So your truck can be fixed first time, virtually every time.

\* Mitsubishi Forklift Trucks has won **four** separate Fork Lift Truck Association Annual Awards for Excellence covering the areas of **Ergonomics**, the **Environment** and **Innovation**.



WESM0968 (10/07) ok  
© 2007 MCFE  
Printed in The Netherlands

[mitforklift@mcf.nl](mailto:mitforklift@mcf.nl)  
[www.mitforklift.com](http://www.mitforklift.com)

NOTE: Performance specifications may vary depending on standard manufacturing tolerances, vehicle condition, type of tyres, floor or surface conditions, applications or operating environment. Trucks may be shown with non-standard options. Specific performance requirements and locally available configurations should be discussed with your Mitsubishi Forklift Trucks distributor. Mitsubishi follows a policy of continual product improvement. For this reason, some materials, options and specifications could change without notice.